

## Burbank Dental Laboratory's Cosmetic & Full Mouth Checklist For Success

### *1st Appt.* Pre-Op Models

#### Photos

- i. Full face smile (forehead to chin), Lip at rest close-up, Smile close-up
- ii. Incisal Shade Picture -(Shade Tab(s) incisal edge to incisal edge on same vertical plane.)
- iii. Over All Shade Picture (Shade tab next to target shade tooth, oriented body-body, incisal to incisal)



Full Face Smile



Close-Up Smile



Lip At Rest



Shade Picture

### Proposed Plan

- i. Quantity, tooth #'s, and pontics
- ii. Tissue or other augmentations planned
- iii. Staging plan
- iv. VDO change (quantify) or remain as current
- v. Type of restorative material(s)
- vi. Patient concerns & goals for case
- vii. Any other goals or concerns

### *2nd Appt.*

Lab Delivers: Diagnostic Wax-Up, Plan Verification Report, Putty Stent of Wax-Up, Prep Guide Model & Prep-Stent

Approval of Wax-Up

2nd Appt  
Send to Lab

Rx for Dura-Temps & VDO Bite



**3rd Appt.**

Lab Delivers: DuraTemps

3 "Sections" staging of preparation & bite records

i. If no VDO change

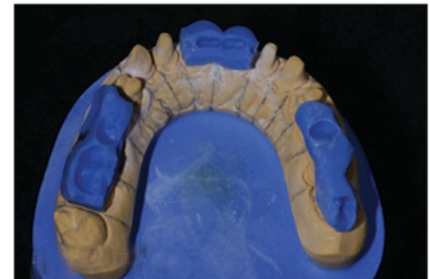
1. Prep single quadrant take hard bite -Luxabite®
2. Prep second quadrant take hard bite -Luxabite®
3. Prep 3rd and final quadrant place previous hard bites and take 3rd hard bite

ii. If VDO change

1. Prep single section try-in pre-made lab provisionals, reline - check VDO and relationship
2. Prep second section try-in pre-made lab provisionals, reline - check VDO and relationship
3. Prep 3rd and final section try-in pre-made lab provisionals, reline - check VDO and relationship
4. Take 3 bites each with 2 provisional sections in place (i.e.. anterior with both posterior sections in place)

iii. If both arches are being restored

1. Prep Both Maxillary & Mandibular Anterior Sections, Try-In & Reline Dura-Temps.
2. Prep Right or Left Maxillary & Mandibular Sections, Try-In & Reline Dura-Temps. Take 3 hard anterior bites: Prep to Opposing Temps for Each Arch.
3. Repeat Contralateral Posterior Sections
4. Take 3 bites each section with 2 provisional sections in place, (1) each prep to temp and (1) temp to temp. (i.e.. anterior with both posterior sections in place)



**3rd Appt  
Send to Lab**

**Full arch prep impressions (max & mand. ), Initial Provisional impressions, all bites in labeled baggies.**

**4th Appt.**

Provisional Approval & Records

Photos of Provisionals

Full face smile (forehead to chin)

Lip at rest close-up

Smile close-up

If Provisionals are only cosmetically altered with no occlusal or VDO adjustments. Only 1 new bite temp to temp is required

If Provisionals occlusion or VDO is altered segmental 3 bites must be taken of each altered provisional arch to preps. (if only one temp arch is occlusally adjusted then only 3 segmental bites are required, if both provisional arches are occlusally adjusted then 2 sets of 3 bites are required, see section 3rd appointment bites for reference)



**4th Appt  
Send to Lab**

**New adjusted & approved provisional impressions, provisional photos, bites.**

Many Cases May Skip Bisque Try-In Stage, Especially If Approved Provisional Models Are Provided

**5th Appt.**

Lab Delivers: Bisque Try-In

Try-In and Adjust Bisque

**6th Appt.**

Lab Delivers: Final Restorations

Cementation of Final Restorations