

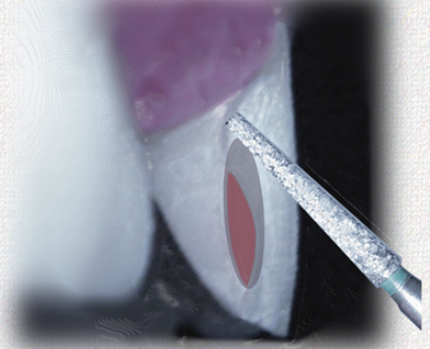
SimplyThin Veneers

Preparation Guide

Depth Cut \geq .3mm



Partially break contact, and prep "dog-leg" under the contact and coronal of the gingival margin.



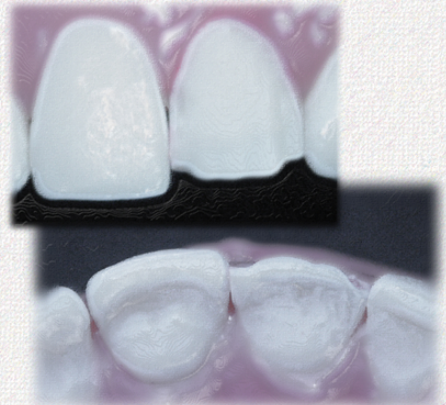
Incisal depth cut \geq .5 Ideal 1.5 incisal reduction to facilitate creation of incisal translucency. Less if veneer will increase length.



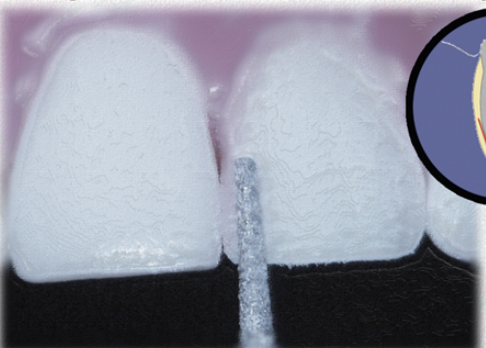
Connect Depth Cuts with coarse diamond, and follow contour of gingival margin.



Refine incisal edge and entire prep with finishing diamond or carbide.



Next use appropriate size diamond to reduce and refine preparation to depth cuts and margin finishing. Add incisal bevel for 3rd facial plane.



BURBANK

DENTAL LAB

800-336-3053

www.burbankdental.com